

Cat6 UTP Keystone Jack - Black

L1-C6-KSJK-BK

PRODUCT DESCRIPTION:

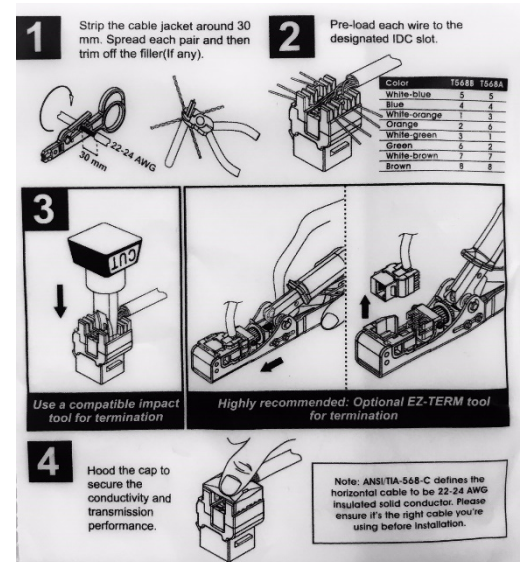
Layer 1 Cat 6 keystone ,22-24 AWG solid conductor, 180 degree Jacks are designed for use with Cat 6 UTP cable and are ideal for Ethernet, Fast Ethernet and Gigabit Ethernet network applications. The outlets feature PCB technology which maintains low insertion loss, return loss and cross talk.

Layer 1 Cat6 Clipsal Style Jacks can be terminated using both a Krone & 110 style punch down tool.



KEY FEATURES

- ◆ Terminates with both Krone & 110 Punch Down Tools
- ◆ Combined T568A & T568B colour coding for easy installation
- ◆ IDC Cap keeps the wires firmly in place
- ◆ Fit into Layer 1 24 Port Unloaded panel P/N L1-PP24-UL along with wall plates/workstation adaptors/surface mount boxes that accept Keystone style Jacks.
- ◆ When used with Layer 1 Clipsal bezel P/N L1-BZ-WH, the Layer 1 keystone Jack is able can fit into Clipsal Style wall plates.
- ◆ Designed for 22-24 AWG Solid Conductors
- ◆ ETL verified to ANSI/TIA-568-C.2
- ◆ UL listed
- ◆ ISO/IEC 11801 2nd edition
- ◆ IEC 60603-7
- ◆ AS/CA S008:2010



TECHNICAL SPECIFICATION

Part Number	L1-C6-KSJK-BK
Description	Cat 6 UTP Clipsal Style Jack - 180 Degree w/IDC Cap
Colour	Black
Contacts	Phosphor bronze contacts with 50u" gold plating
Insertion Life	750 mating cycles with FCC compliant plug
Durability	200 termination cycles
Operating Temperature Range	-10 deg C to 60 deg C